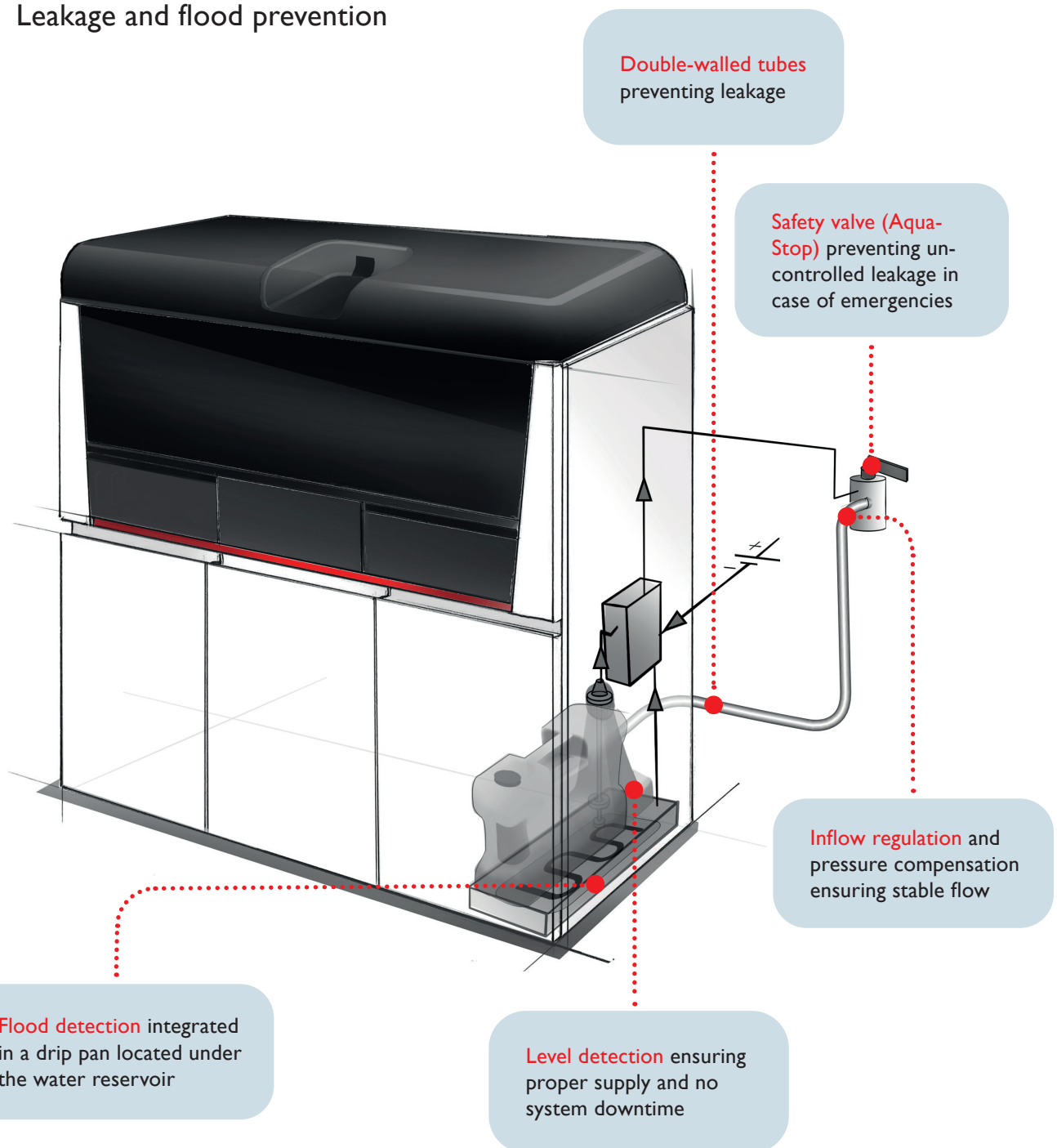


## DIRECT PLUMBING KIT

- Continuous supply and waste
- No hands-on time
- Pressure stability
- Leakage and flood prevention



The Direct Plumbing Kit connects a system directly to the central DI water supply and drain. This is especially suitable for applications requiring high DI water throughput without any interruptions of the workflow by the user.

A connection to the water deionization system is also possible.

Several integrated sensors monitor the tubing line integrity.

## SPECIFICATIONS

<b>Provided liquid flow</b>	2,5 l/min $\pm$ 10 %
<b>Required inlet pressure range</b>	1 bar – 10 bar
<b>Required inlet flow rate</b>	3 l/min
<b>Liquid connection supply line</b>	G3/4"
<b>Liquid connection system</b>	Valved CPC coupling
<b>Power requirements</b>	24 V <sub>DC</sub> $\pm$ 1 V <sub>DC</sub> , 0.8 A

The herein provided information and specifications by STRATEC SE are provided on an "as-is" basis and may be subject to changes, omissions and errors. STRATEC SE shall have no liability for the accuracy and completeness of these information and specifications and cannot be held liable for any representations or warranties, expressed or implied, and any third party claims or losses of any damages thereof. STRATEC SE reserves the right to make any changes to the information and specifications at any time and without notice. The applications and products herein may not be available in all markets.

STRATEC is a registered trademark. © 2022, STRATEC SE, Germany, all rights reserved.